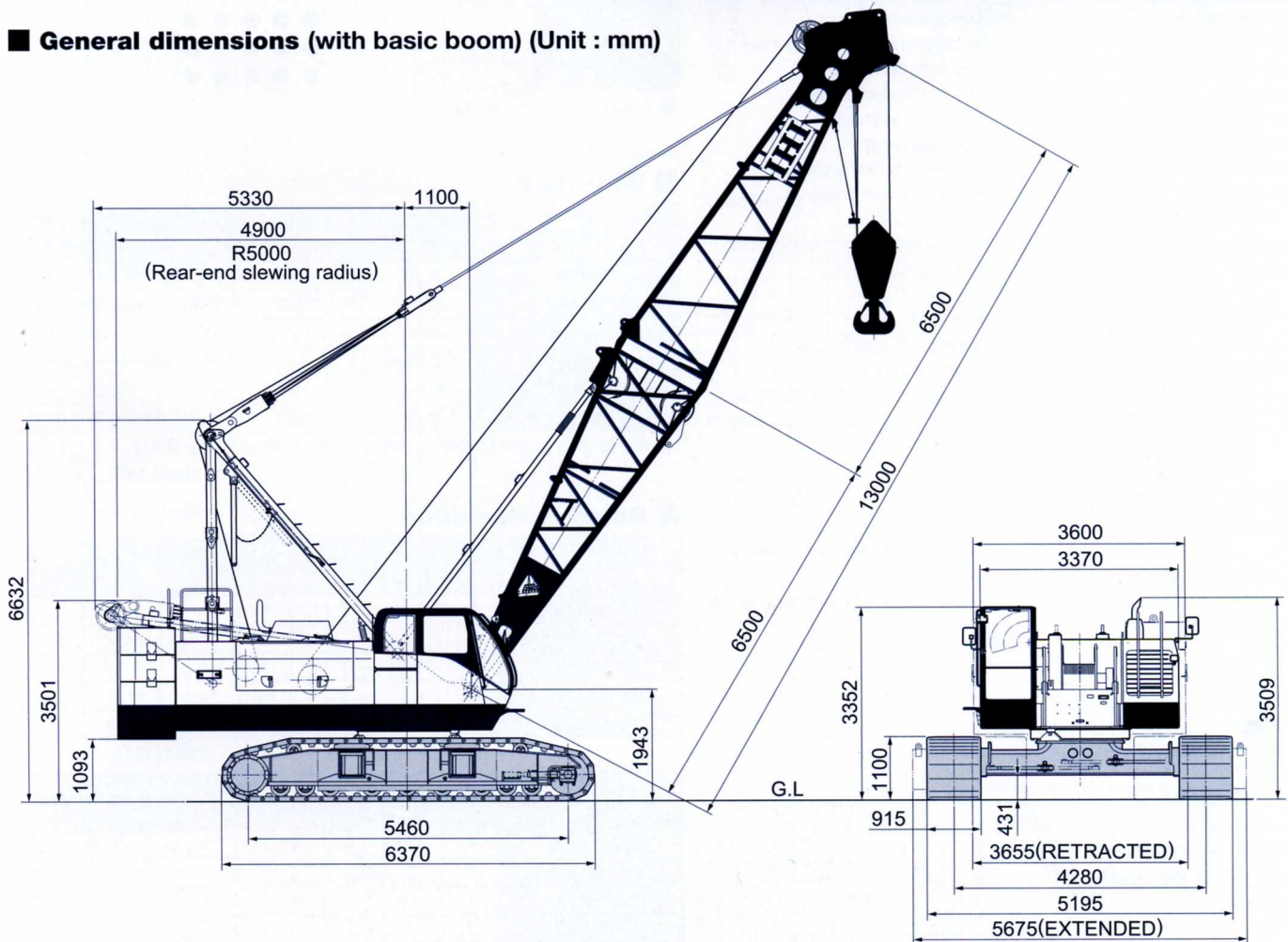


CCH9000EX

Max. Lifting Capacity : 90t
 Max. Boom Length : 61m
 Max. Jib Combination : 46m + 22m

General dimensions (with basic boom) (Unit : mm)



Main specifications

Performance	
Slewing speed	3.0 rpm
Travel speed	1.4/1.0 km/hr
Gradeability	30% (16.7°)
Engine	
Make	Cummins Inc.
Model	QSB6.7
Type	4-cycle, water-cooled, turbocharged and air cooled
Total displacement	6.7 L
Rated output	179 kW / 2,000 min ⁻¹ (240 HP / 2,000 rpm)
Fuel tank capacity	400 L
Battery	12 V × 120 AH × 2 pcs.
Load hoist system (Main & Aux.)	
Hydraulic motor	Axial piston type
Reduction gear	Main drum : Two-stage planetary gear Aux drum : One-stage planetary gear and single stage spur gear
Hoist drum	2-grooved cylindrical drums on 2 individual shafts, with lebus type groove
Clutch	Internal expanding band type
Brake	External contracting band type
Drum lock	Ratchet type
Boom hoist system	
Hydraulic motor	Axial piston type
Reduction gear	Two-stage planetary gear
Hoist drum	Grooved cylindrical single drum on shaft, with lebus type groove
Brake	Wet type multi disc
Drum lock	Ratchet type

Crane specifications

Max. lifting capacity (metric ton) × working radius (m)	90 × 4.0	
Max. main boom length (m)	61	
Max. boom length with jib (main+jib) (m)	68 (46 + 22)	
Rope speed	Main hoisting/lowering (m/min)	*High 100 / 75 ; Lo 50-38
	Auxiliary hoisting/lowering (m/min)	*High 100 / 82 ; Lo 50-41
	Boom hoisting/lowering (m/min)	*55
Part lines	90 ton hook block	9 part lines
	15 ton hook block	2 part lines
	Boom hoisting/lowering	12 part lines
Standard counterweight (ton)	24.0	
Crawler weight (ton)	10.5	
Total operating weight (with 13m basic boom) (ton)	Approx. 84.2	
Average ground bearing pressure (kPa) [kgf/cm ²]	(82) [0.84]	

Note 1 : The value marked with "*" may change depending on the loads given.