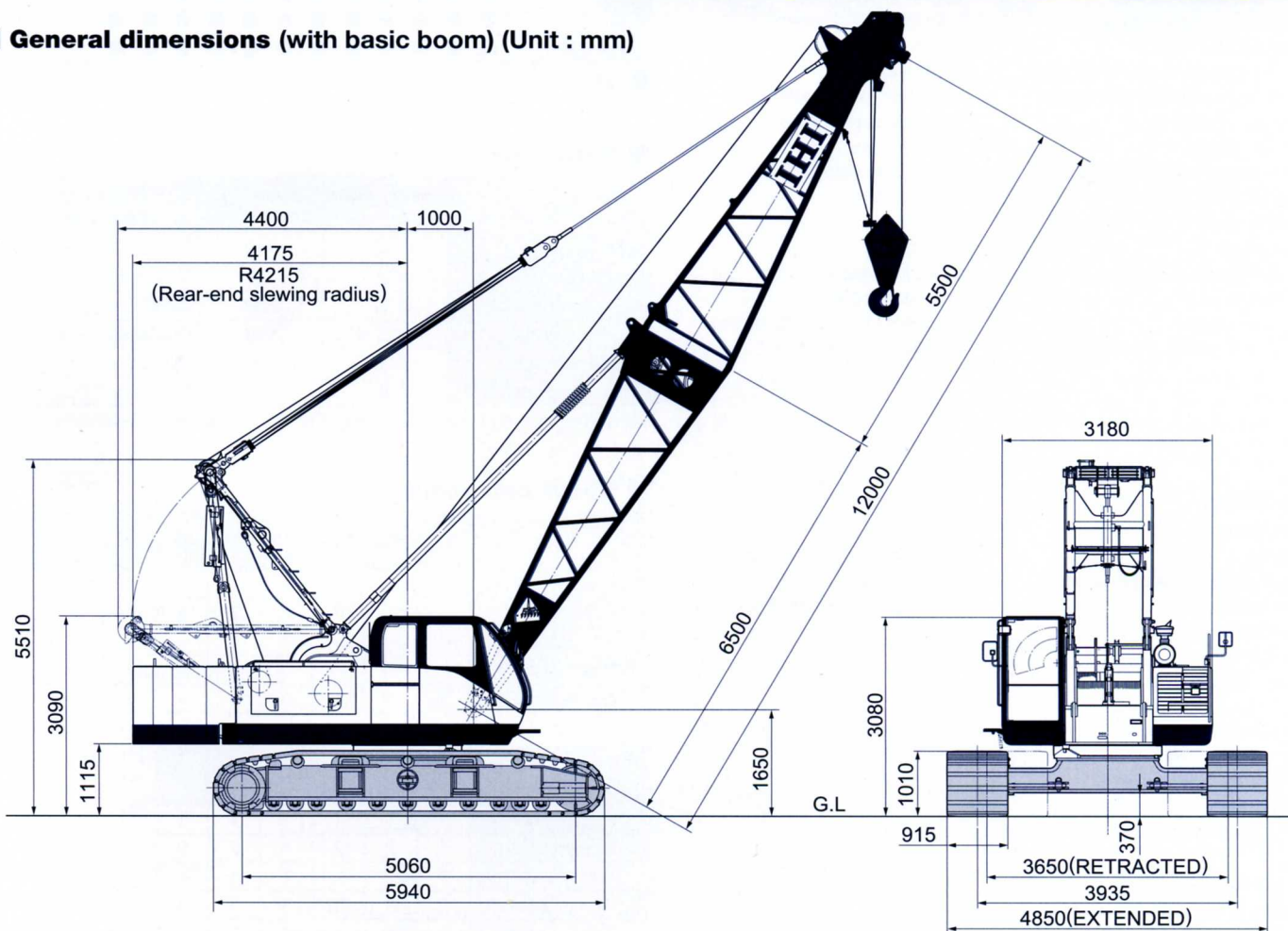


# CCH700EX

Max. Lifting Capacity : 70t  
 Max. Boom Length : 54m  
 Max. Jib Combination : 45m + 18m

## ■ General dimensions (with basic boom) (Unit : mm)



## ■ Main specifications

<b>Performance</b>	
Slewing speed	3.3 rpm
Travel speed	2.0/1.3 km/hr
Gradeability	40% (21.8°)
<b>Engine</b>	
Make	Cummins Inc.
Model	QSB6.7
Type	4-cycle, water-cooled, turbocharged and air cooled
Total displacement	6.7 L
Rated output	149 kW / 2,100 min <sup>-1</sup> (200 HP / 2,100 rpm)
Fuel tank capacity	240 L
Battery	12 V × 120 AH × 2 pcs.
<b>Load hoist system (Main &amp; Aux.)</b>	
Hydraulic motor	Axial piston type
Reduction gear	One-stage planetary gear and single stage spur gear
Hoist drum	2-grooved cylindrical drums on individual shaft mounted inline with lebus type groove
Clutch	Internal expanding band type
Brake	External contracting band type
Drum lock	Ratchet type
<b>Boom hoist system</b>	
Hydraulic motor	Axial piston type
Reduction gear	Two-stage planetary gear
Hoist drum	Grooved cylindrical single drum on shaft, with lebus type groove
Brake	Wet type multi disc
Drum lock	Ratchet type

## ■ Crane specifications

Max. lifting capacity (metric ton) × working radius (m)	70 × 3.8	
Max. main boom length (m)	54	
Max. boom length with jib (main+jib) (m)	63 (45+18)	
Rope speed	Main hoisting/lowering (m/min)	*High 110 / 80 ; Lo 55 / 40
	Auxiliary hoisting/lowering (m/min)	*High 110 / 80 ; Lo 55 / 40
	Boom hoisting/lowering (m/min)	*60
Part lines	70 ton hook block	10 part lines
	15 ton hook block	3 part lines
	Boom hoisting/lowering	14 part lines
Standard counterweight (ton)	26.3	
Total operating weight (with 12m boom) (ton)	Approx. 68.1	
Average ground bearing pressure (kPa) [kgf/cm <sup>2</sup> ]	(68) [0.69]	

Note1 : The value marked with "\*" may change depending on the loads given.