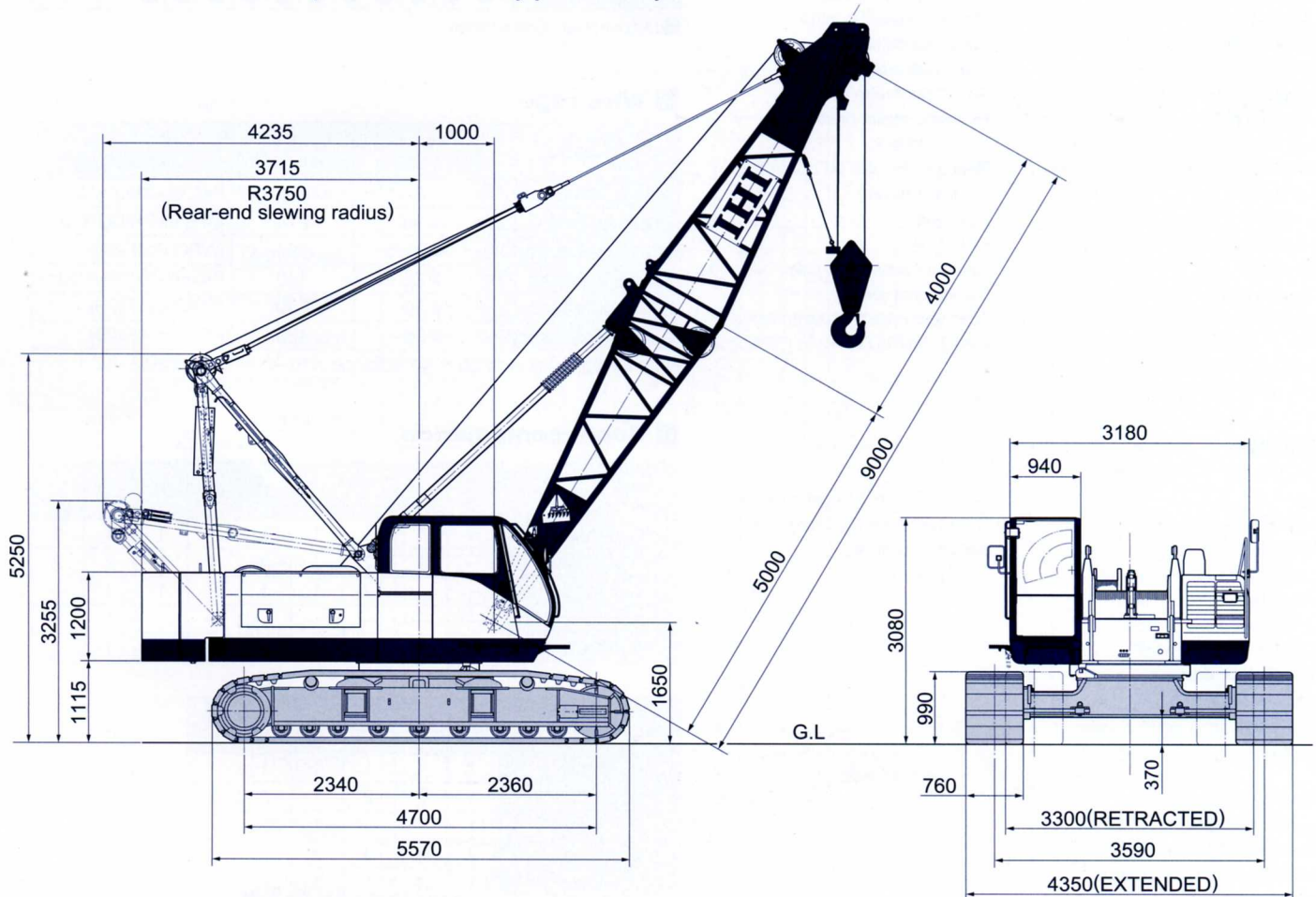


CCH500EX

Max. Lifting Capacity : 50t
 Max. Boom Length : 51m
 Max. Jib Combination : 42m + 15m

General dimensions (with basic boom) (Unit : mm)



Main specifications

| Performance | |
|---------------------------------|--|
| Slewing speed | 3.5 rpm |
| Travel speed | 1.6 km/hr |
| Gradeability | 40% (21.8°) |
| Engine | |
| Make | Cummins Inc. |
| Model | QSB6.7 |
| Type | 4-cycle, water-cooled, turbocharged and air cooled |
| Total displacement | 6.7 L |
| Rated output | 149 kW / 2,100 min ⁻¹ (200 HP / 2,100 rpm) |
| Fuel tank capacity | 240 L |
| Battery | 12 V × 120 AH × 2 pcs. |
| Load hoist system (Main & Aux.) | |
| Hydraulic motor | Axial piston type |
| Reduction gear | One-stage planetary gear and single stage spur gear |
| Hoist drum | 2-grooved cylindrical drums on individual shafts mounted inline with lebus type groove |
| Clutch | Internal expanding band type |
| Brake | External contracting band type |
| Drum lock | Ratchet type |
| Boom hoist system | |
| Hydraulic motor | Axial piston type |
| Reduction gear | Two-stage planetary gear |
| Hoist drum | Grooved cylindrical single drum on shaft, with lebus type groove |
| Brake | Wet type multi disc |
| Drum lock | Ratchet type |

Crane specifications

| | | |
|--|-------------------------------------|-----------------------------|
| Max. lifting capacity (metric ton) × working radius (m) | 50 × 3.7 | |
| Max. main boom length (m) | 51 | |
| Max. boom length with jib (main+jib) (m) | 57 (42 + 15) | |
| Rope speed | Main hoisting/lowering (m/min) | *High 110 / 80 ; Lo 55 / 40 |
| | Auxiliary hoisting/lowering (m/min) | *High 110 / 80 ; Lo 55 / 40 |
| | Boom hoisting/lowering (m/min) | *60 |
| Part lines | 50 ton hook block | 8 part lines |
| | 15 ton hook block | 3 part lines |
| | Boom hoisting/lowering | 12 part lines |
| Standard counterweight (ton) | 17.7 | |
| Total operating weight (with 9 m boom) (ton) | Approx. 51.4 | |
| Average ground bearing pressure (kPa) [kgf/cm ²] | (66) [0.67] | |

Note 1 : The value marked with "*" may change depending on the loads given.