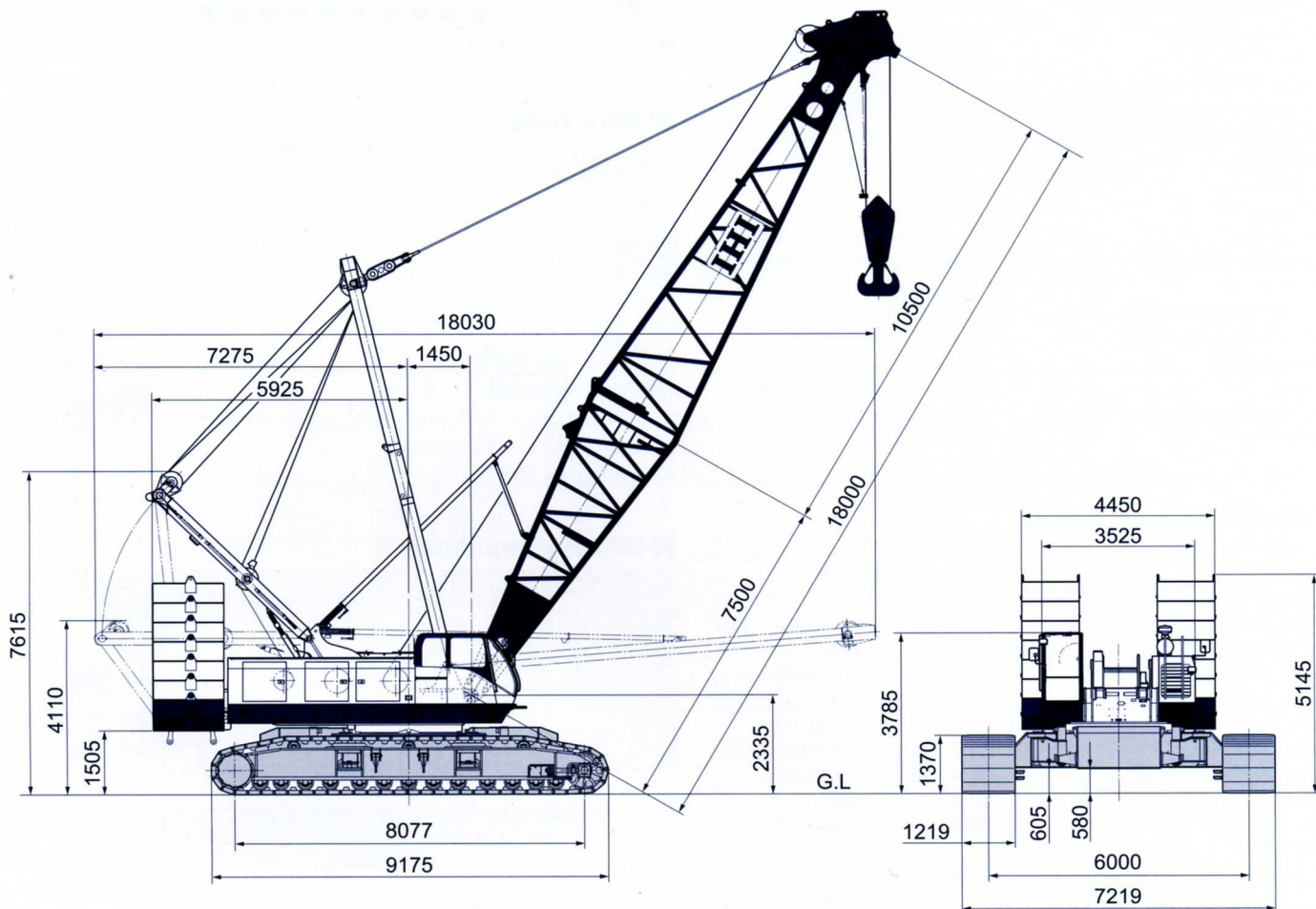


# CCH 2500 EX

Max. Lifting Capacity : 250t  
 Max. Boom Length : 90m  
 Max. Jib Combination : 72m + 37m

## General dimensions (with basic boom) (Unit : mm)



## Main specifications

Performance	
Slewing speed	1.7 rpm
Travel speed	0.9/0.6 km/hr
Gradeability	30% (16.7°)
Engine	
Make	Cummins Inc.
Model	QSL
Type	4-cycle, water-cooled, turbocharged and air cooled
Total displacement	8.9 L
Rated output	242 kW / 2,000 min <sup>-1</sup> (325 HP / 2,000 rpm)
Fuel tank capacity	680 L
Battery	12 V × 150 AH × 2 pcs.
Load hoist system (Main & Aux.)	
Hydraulic motor	Axial piston type
Reduction gear	Two-stage planetary gear
Hoist drum	2-grooved cylindrical drums on 2 individual shafts. Main/Auxiliary drum in same width, with lebus type groove.
Clutch	Internal expanding band type
Brake	External contracting band type
Drum lock	Ratchet type
Boom hoist system	
Hydraulic motor	Axial piston type
Reduction gear	Three-stage planetary gear
Hoist drum	Grooved cylindrical single drum on shaft, with lebus type groove
Brake	Wet type multi disc
Drum lock	Ratchet type

## Crane specifications

Max. lifting capacity (metric ton) × working radius (m)	250 × 4.7	
Max. main boom length (m)	90	
Max. boom length with jib (main+jib) (m)	109 (72+37)	
Rope speed	Main hoisting/lowering (m/min)	*High 120 / 60 ; Lo 60-30
	Auxiliary hoisting/lowering (m/min)	*High 120 / 60 ; Lo 60-30
	Boom hoisting/lowering (m/min)	*85~40
Part lines	250 ton hook block	16 part lines
	25 ton hook block	2 part lines
	Boom hoist/lowering	18 part lines
Standard counterweight (ton)	88.9	
Carbody weight (ton)	29.0	
Total operating weight (with 18m boom) (ton)	Approx. 220.0	
Average ground bearing pressure (kPa) [kgf/cm <sup>2</sup> ]	(110) [1.12]	

Note 1 : The value marked with "\*" may change depending on the loads given.