

IHI

CCH 1200

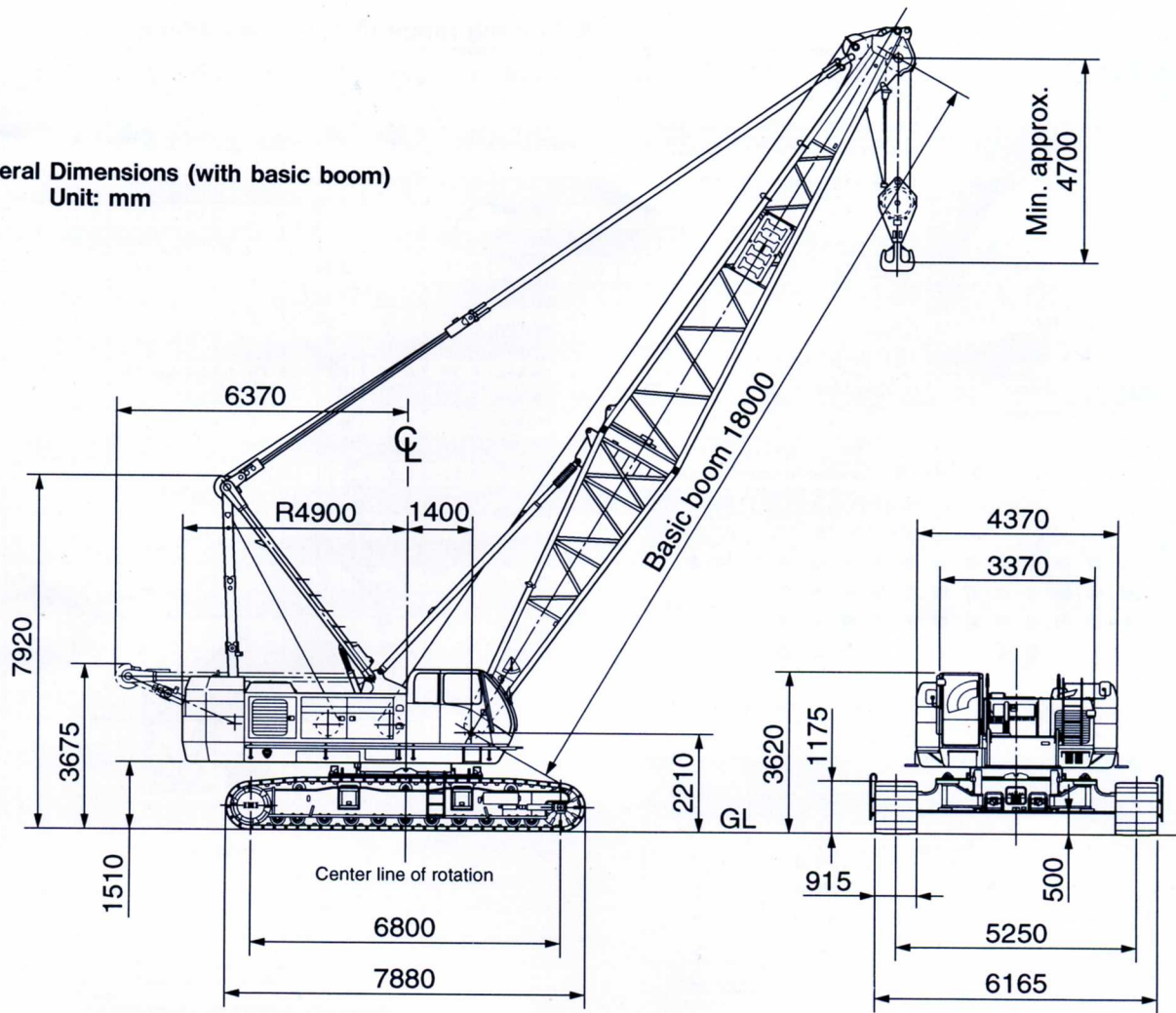
Fully Hydraulic Crawler Crane

Lifting capacity 120 metric tons



IHI Construction Machinery Limited

■ General Dimensions (with basic boom)
Unit: mm



Model K13C-UV
374PS / 2000rpm
275kw / 2000min

■ Specifications

Performance	
Swing speed	2.2 rpm
Travel speed	* 1.5/1.0 km/h (0.93/0.62 mph)
Gradeability	30% (Approx. 16.7° with 18m Boom and 120ton hook block)
Engine	
Make	HINO MOTOR
Model	K13TJ (with turbo) diesel engine 4-cycle, water cooled, overhead valve
Type	Direct injection diesel engine
Total piston displacement	12.882 ℓ
Rated output	320 PS/2000 rpm
Fuel tank capacity	450 ℓ
Battery	12 V × 150 AH × 2 pcs.
Load hoist system (Main & Aux.)	
Hydraulic motor	Variable displacement axial piston type
Reduction gear	Two-stage planetary gear and single stage spur gear
Hoist drum	Tandem drums driven independently by hydraulic motor, lagging type with lebus grooved drum.
Clutch	Internal expanding band type
Brake	External contracting type
Drum lock	Ratchet lock
Hydraulic pump	Variable displacement axial piston type × 2 Gear pump × 3
Boom hoist system	
Motor	Axial piston type
Reduction gear	One stage planetary gear + One stage spur gear
Hoist drum	Lebus grooved drum
Brake	Automatic spring - loaded hydraulically released wet type multi-disk
Drum lock	Ratchet lock

*Travel speed changes depending on the load.

■ Standard Equipment

- **Instrument for crane**
 - Engine tacho meter (Hour meter)
 - Hydraulic oil pressure gauge (for control circuit)
 - Fuel level gauge
 - Engine coolant thermo indicator
 - Engine oil pressure indicator
 - Hydraulic oil thermo indicator
 - **Lighting for crane**
 - 2-Work light (24v × 80w)
 - 1-Room light (24v × 10w)
 - **Safety device**
 - Automatic stop for hook overwinding
 - Automatic stop for boom overwinding
 - Telescopic boom limit stop
 - Swing lock
 - Main and auxiliary drum lock
 - Boom hoist drum lock
 - 2nd. boom stop device (82° non-resettable)
 - Clutch engage pin on main and auxiliary winch
 - Safety valve for hydraulic circuit
 - Counter balance valve
 - Control lever locking device
 - **Other standard accessories**
 - Front windshield wipers (intermittent, w/washer)
 - Roof wipers (intermittent, w/washer)
 - Sunvisor
 - Sun shade
 - Strage pouch
 - Tool box
 - Reclining operator's seat
 - Floor mat
- Jack device for dismantling
 - Lateral cylinders for dismantling crawler
 - Steps for operator's cab
 - Radio
 - Cigarette lighter
 - Ash tray
 - Large rear view mirrors (right/left)
 - Signal horn
 - Electric fuel filling pump
 - Swing warning flasher
 - Travel warning flasher
 - High "A" frame erecting device
 - Low-noise cab
 - Bronze tinted glass
 - Wire mesh boom workway (for inner boom)
 - Foot rest
 - Electric type engine throttle
 - Foot pedal-type engine throttle
 - Automatic engine deceleration
 - Ultra low speed control
 - Hydraulic assist brake for main and aux. winch
 - Winch mode selector for main and aux. winch
 - Rope guide roller on outer boom
 - Plug socket
 - Loud speaker
 - Emergency engine stop switch
 - OK monitor